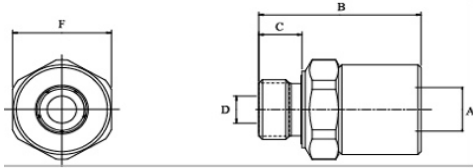


Technical data

Material coupling: Steel

Temperature range: -30°C — +100°C (-22°F — +212°F)



Coupling, 3/8"	Part No.	Connection	Max working pressure	A	B	C	D	F
Swivel	148600606	G 3/8"	350 bar (5080 PSI)	13.0	47.1	12.0	7.0	27
Coupling, 1/2"	Part No.	Connection	Max working pressure	A	B	C	D	F
Swivel	148600808	G 1/2"	350 bar (5080 PSI)	16.0	52.6	14.0	9.5	32
Coupling, 3/4"	Part No.	Connection	Max working pressure	A	B	C	D	F
Swivel	148601222	G 3/4"	350 bar (5080 PSI)	23	67	16	15	41
Coupling, 1"	Part No.	Connection	Max working pressure	A	B	C	D	F
Swivel	148601616	G 1"	250 bar (3630 PSI)	30.0	74.6	16.0	21.0	50

Thread connections are listed according to ISO Standards. All measurements are in mm. Check with an authorized CEJN distributor for availability and prices.