



Motorized Priority Flow Control Valve with Pressure Compensation

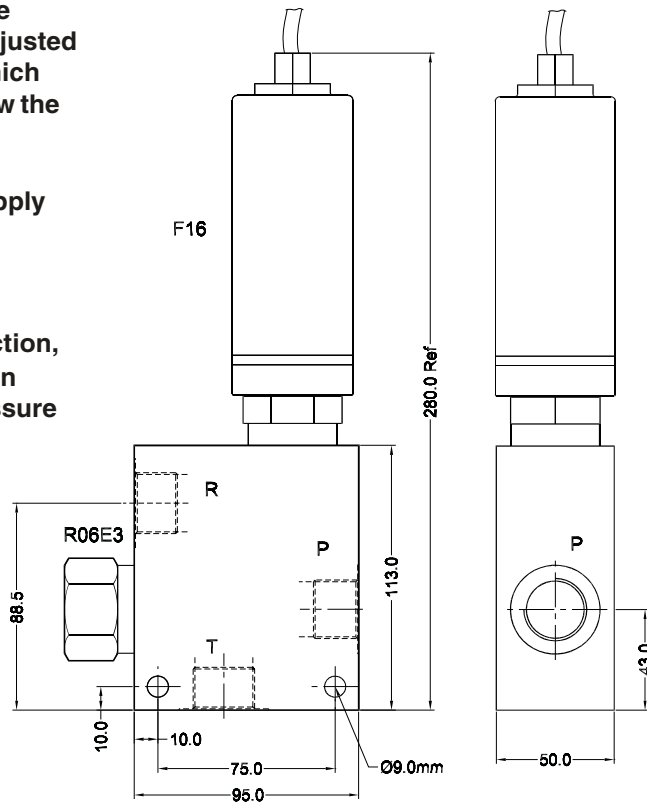
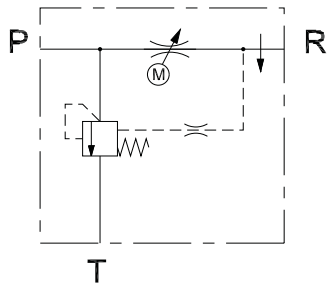
Page Number
80.20.30

FEATURES:

- Max inlet flow 120 l/min.
- Regulated flow range 0 - 110 l/min.
- Maximum working pressure 210 Bar
- Pressure compensated
- Aluminium 2011 T6 body with anodising
- The flow adjustment is achieved by a motorized adjustable orifice which can be set anywhere between zero and fully open. The valve is adjusted by applying voltage across the terminals which are polarity sensitive, one way increases flow the other decreases flow. The valve will hold its setting when the voltage is removed
- Controlled directly from 12 or 24 Volt DC supply No need for additional electronic amplifier
- Maximum current 0.5 Amps
- Standard electrical cable length 1.3 m
- If excess flow is used for a downstream function, the pressure required to operate this function should not exceed the primary function pressure

MODEL	OP721
BODY NO.	227258

For 24V DC operation add 100 Ohm resistor in series with motor



Ports: 3/4" BSPP

ORDERING CODE

OP721 - - -

Regulated Flow Range
20 - 0-65 l/min.
35 - 0-110 l/min.

Operating Speed
03 - 3.5 sec.
07 - 7 sec.
24 - 24 sec.
48 - 48 sec.

Compensating Pressure
05 - 5.5 Bar
10 - 10 Bar (std.)
15 - 15 Bar
Consult factory for information on adjustable compensators