



Motorized Flow Control Valve with Pressure Compensation

Page Number
80.10.20

FEATURES:

- Max inlet flow 60 l/min.
- Regulated flow range 0 - 50 l/min.
- Maximum working pressure 210 Bar
- Pressure compensated
- Suitable for use with motors connected in series
- Aluminium 2011 T6 body with anodising
- Controlled directly from 12 or 24 Volt DC supply
No need for additional electronic amplifier
- Maximum current 0.5 Amps
- Direct mounting to the following motors interface: OMP, OMR, EPM, EPRM, GMP
- Standard electrical cable length: 1.3 m

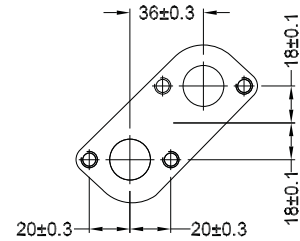
MODEL

OP700

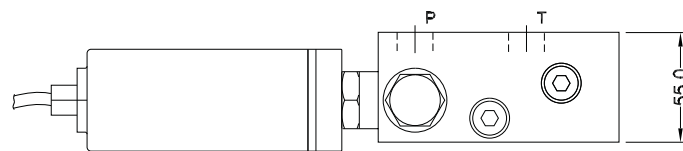
BODY NO.

227176

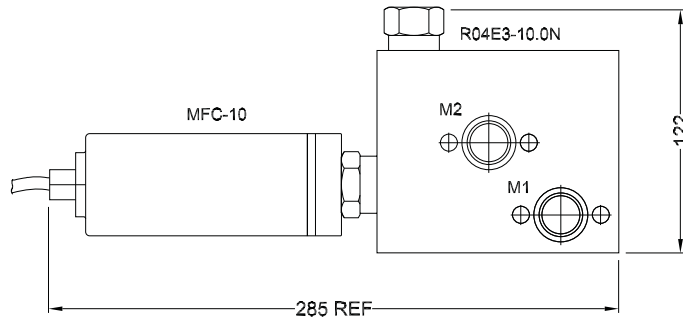
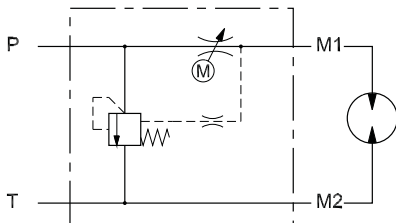
Motor Interface



Ports: 1/2" BSPP



For 24V DC operation add 100 Ohm resistor in series with motor



ORDERING CODE

OP700 - - -

Regulated Flow Range
05 - 0-15 l/min.
15 - 0-50 l/min.

Operating Speed
03 - 3.5 sec.
07 - 7 sec.
24 - 24 sec.
48 - 48 sec.

Compensating Pressure
05 - 5 Bar
10 - 10 Bar
15 - 15 Bar
Consult factory for information on adjustable compensators