

OILPATH

OP 27

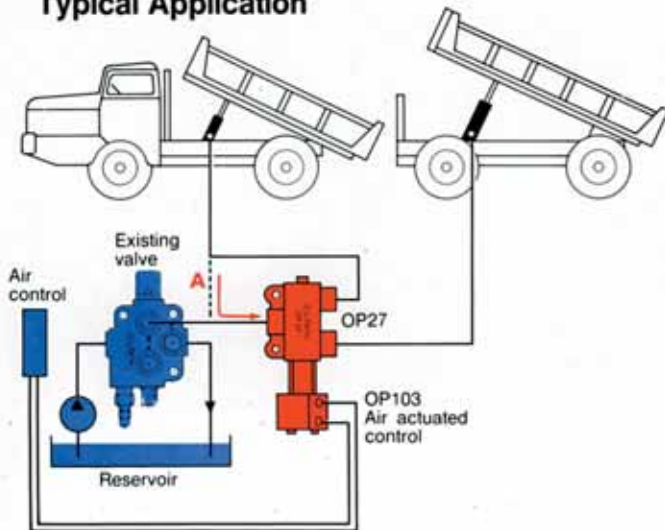
SELECTOR VALVE



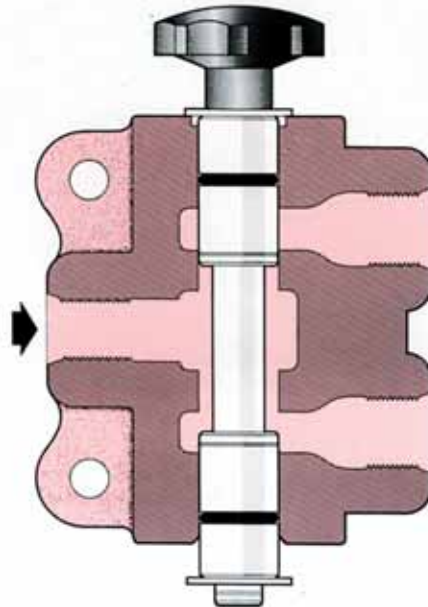
For diverting a single oil flow to either of two hydraulic circuits

- 3-port, cast iron construction.
- Simple, push-pull operation.
- Working pressure up to 3000 psi.
- Flow capacity up to 25 gpm.
- Easily added to existing OP20 circuit to facilitate control of additional equipment.

Typical Application



When a tip trailer is added to an existing tip truck, OP27 can be installed as shown. Line (A) from existing valve is removed from cylinder and connected to OP27 inlet port. OP27 outlets are then connected to truck and trailer tip cylinders. Where an air supply is available, OP103 air activated control can be fitted for added convenience.

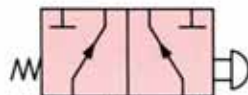


SECTION

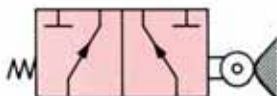
Specifications given in this brochure are correct at time of publication. The manufacturer reserves the right to change specifications without notice.



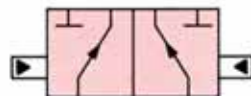
Standard



Spring return with knob



Spring return with cam

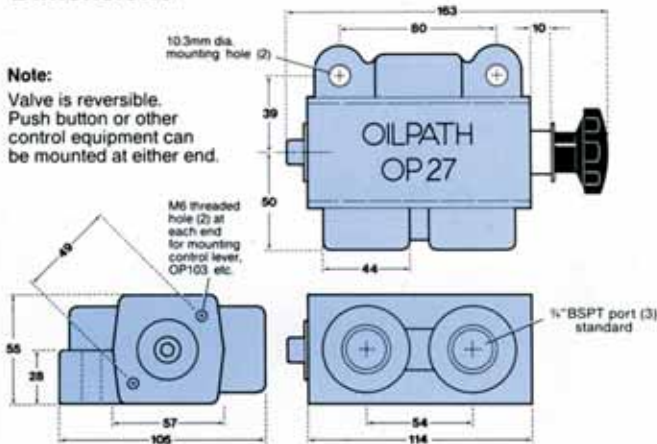


Air actuated (OP103)

Options (available on special order);

- Port sizes: 1/2" BSPT.
3/4" BSPT.
1" BSPT.
1/4" UNF O-ring.
1 1/16" UNF O-ring.
- Controls: OP103 (air actuated).
Morse cable control.
OP20 handle instead of push-pull knob.
Knob control. Spring return optional.
Cam roller, spring return.

Dimensions



Specifications

Ports	3/4" BSPT standard.
Spool	Hard chrome plated
Leakage	1 cipm at 3000 psi.
Flow capacity	25 gpm (Imperial)
Max. pressure	3000 psi.
Detent	Factory fitted on request.

WARRANTY

Oilpath products are warranted to be free of defects in material or workmanship. This Warranty voids all other warranties, whether expressed or implied, and shall be in effect for six months from date of purchase. The Warranty is limited to replacement or repair, excluding seals or damage arising from misuse or incorrect installation. The Company accepts no liability for faults caused by improper use or faulty maintenance of the product, or its operation beyond recommended specifications, or contingent or consequential loss or damage under any situation whatsoever. All unauthorised modifications to the product automatically voids the conditions of this Warranty.

Manufactured by :

OILPATH PTY. LTD.
INC. IN SOUTH AUSTRALIA
A.B.N. 97 007 683 472

21 Deloraine Road,
Edwardstown, South Australia.
PO Box 132, Edwardstown 5039.
Ph: (08) 8277 4933 Fax: (08) 8277 9126