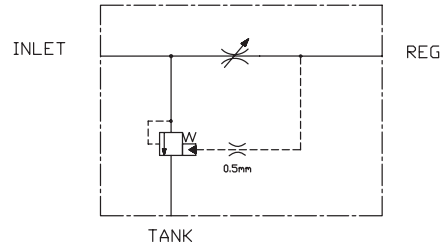
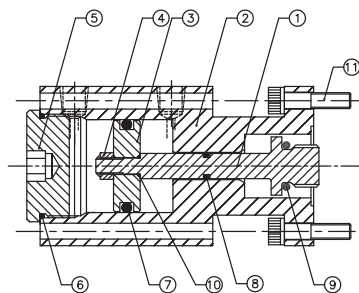
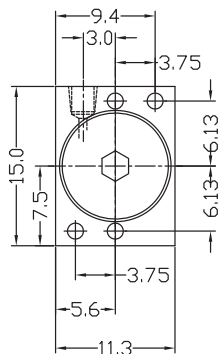
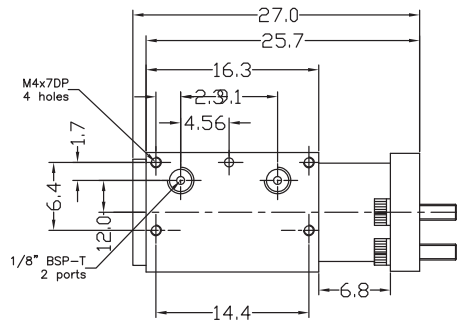


1. TYPE - PRIORITY FLOW CONTROL PRESSURE COMPENSATED WITH BY PASS TO TANK
2. MAX INLET FLOW - 100 L/MIN
3. MAX REGULATED FLOW - 45 L/MIN
4. MAX PRESSURE - 3000 PSI
5. NO LOAD IS ALLOWED ON TANK LINE
6. COMPENSATOR SPRING - 10 BAR
7. SPOOL 'P' ALLOWS TO SET FLOW TO ALL FOLLOWING DP20 SPOOLS AND CAN BE INSTALLED INSTEAD OF ANY SPOOL
8. INSTALLATION REQUIRE SPECIAL CROSS DRILL HOLES AND CAN BE PERFORMED ONLY BY MANUFACTURER IN FACTORY CONDITIONS



OILPATH PTY LTD
 21 DELORAIN ROAD, EDWARDSTOWN
 PHONE (08) 8277 4933 FAX (08) 8277 9126 A.C.N. 007 683 472

REVISION DETAILS			NOTES	GENERAL TOLERANCE	TITLE
ECN	DATE	DESCRIPTION		0. = ±0.5 mm 0.0 = ±0.25 mm 0.00 = ±0.10 mm 0.000 = ±0.02 mm √ 1.6 © 0.10 UNLESS STATED OTHERWISE SCALE: SHEET 1 OF 1	OP20 FLOW CONTROL SPOOL "P"
					DRG. NO. MATL: DRN: V.Troyanovsky DATE: 18/07/04
					CKD: DATE: APP: DATE:



TECHNICAL DATA

Working air pressure - 70-100 psi
 Piston stroke - ± 9.0 mm
 Ports - 1/8" BSP-T

TORQUE REQUIREMENTS

Piston Rod 1 to spool - 40-45 Nm
 Nut 4 to piston rod 1 - 18-20 Nm
 Plug 5 to cylinder 2 - 60-65 Nm
 Screws 11 to OP20 body - 18-20 Nm

ITEM No.	DESCRIPTION	No. OFF	PART No.
11	SHCS - M6x25 Long	4	415165
10	O-Ring - 6.0x1.0 70 DURO	1	402031
9	O-Ring - BS 112 70 DURO	1	401007
8	O-Ring - BS 011 70 DURO	1	401002
7	O-Ring - 27 x 4.0 70 DURO	1	401174
6	O-Ring - BS 126 70 DURO	1	401057
5	Air Actuator Plug	1	240115
4	M6x1.0 Stainless Steel Nyloc Nut	1	408025
3	Piston	1	238038
2	Air Actuator Cylinder	1	253052
1	Piston Rod	1	248036

ITEM No.	DESCRIPTION	No. OFF	PART No.
----------	-------------	---------	----------

OILPATH PTY LTD
 21 DELORAIN ROAD, EDWARDSTOWN
 PHONE (08) 8277 4933 FAX (08) 8277 9126 A.C.N. 007 683 472

REVISION DETAILS			NOTES	GENERAL TOLERANCE	TITLE
ECN	DATE	DESCRIPTION	1. ALL DIMENSIONS IN mm. 2. APPLY MULTIPURPOSE AUTOMOTIVE GREASE TO "O"-RINGS AND ALL MOVING PARTS BEFORE ASSEMBLY 3. APPLY LOCTITE TO PISTON ROD THREAD BEFORE ASSEMBLY	0. = ±0.5 mm 0.0 = ±0.25 mm 0.00 = ±0.10 mm 0.000 = ±0.02 mm √ 1.6 © 0.10 UNLESS STATED OTHERWISE SCALE: 1:1 SHEET 1 OF 1	OP-106 AIR ACTUATOR Assembly drawing
					DRG. NO. 506023 DRN: V.TROYANOVSKY DATE: 22/3/99
					CKD: DATE: APP: DATE: