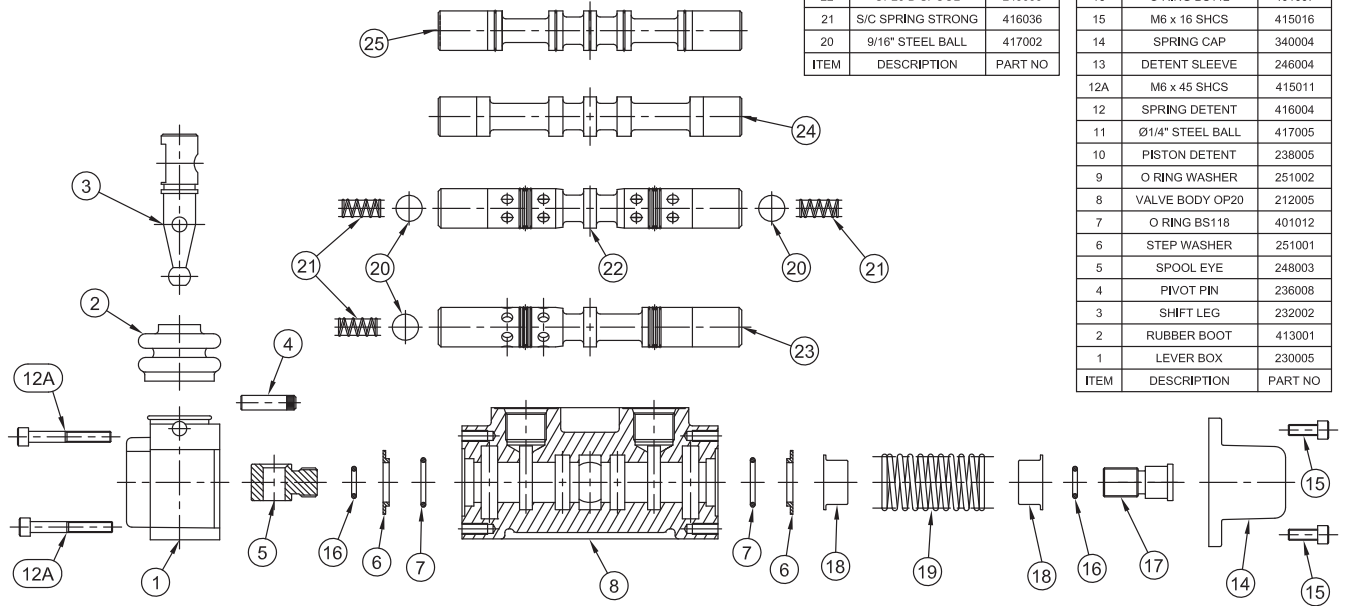


25	OP20 L SPOOL	249010
24	OP20 M SPOOL	249008
23	OP20 S SPOOL	249007
22	OP20 D SPOOL	249006
21	S/C SPRING STRONG	416036
20	9/16" STEEL BALL	417002
ITEM	DESCRIPTION	PART NO

19	SPRING CENTRE	416013
18	SPRING CAP	248017
17	SPRING STUD	248002
16	O RING BS112	401007
15	M6 x 16 SHCS	415016
14	SPRING CAP	340004
13	DETENT SLEEVE	246004
12A	M6 x 45 SHCS	415011
12	SPRING DETENT	416004
11	Ø1/4" STEEL BALL	417005
10	PISTON DETENT	238005
9	O RING WASHER	251002
8	VALVE BODY OP20	212005
7	O RING BS118	401012
6	STEP WASHER	251001
5	SPOOL EYE	248003
4	PIVOT PIN	236008
3	SHIFT LEG	232002
2	RUBBER BOOT	413001
1	LEVER BOX	230005
ITEM	DESCRIPTION	PART NO



OILPATH PTY LTD

21 DELORAINE ROAD, EDWARDSTOWN
PHONE (08) 8277 4933 FAX (08) 8277 9126

A.C.N. 007 683 472

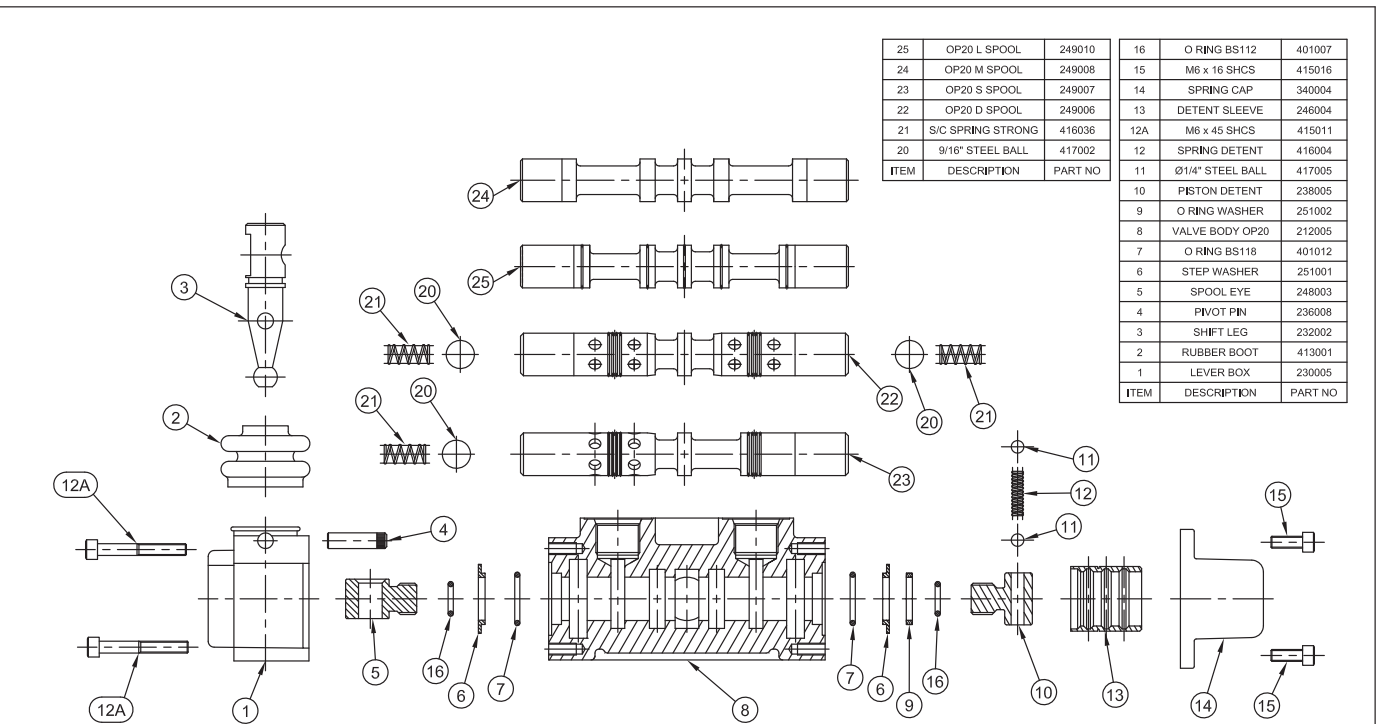
TITLE OP20 ASSEMBLY SPRING CENTRE

DRG. NO.	MATL: ****	
*****	DRN: James WEIR	DATE: 19/11/2003
0 REV A4	CKD:	DATE:
APP:	APP:	DATE:

REVISION DETAILS		
ECN	DATE	DESCRIPTION

NOTES
- ALL DIMENSIONS IN mm
- BREAK ALL SHARP EDGES
- ALL DRILL DEPTHS ARE TO SHOULDER

GENERAL TOLERANCE
0. = ±0.5 mm
0.0 = ±0.25 mm
0.00 = ±0.10 mm
0.000 = ±0.02 mm
✓ 1.6
⊙ 0.10
UNLESS STATED OTHERWISE
SCALE: SHEET 1 OF 1



25	OP20 L SPOOL	249010
24	OP20 M SPOOL	249008
23	OP20 S SPOOL	249007
22	OP20 D SPOOL	249006
21	S/C SPRING STRONG	416036
20	9/16" STEEL BALL	417002
ITEM	DESCRIPTION	PART NO

16	O RING BS112	401007
15	M6 x 16 SHCS	415016
14	SPRING CAP	340004
13	DETENT SLEEVE	246004
12A	M6 x 45 SHCS	415011
12	SPRING DETENT	416004
11	Ø1/4" STEEL BALL	417005
10	PISTON DETENT	238005
9	O RING WASHER	251002
8	VALVE BODY OP20	212005
7	O RING BS118	401012
6	STEP WASHER	251001
5	SPOOL EYE	248003
4	PIVOT PIN	236008
3	SHIFT LEG	232002
2	RUBBER BOOT	413001
1	LEVER BOX	230005
ITEM	DESCRIPTION	PART NO

OILPATH PTY LTD

21 DELORAINE ROAD, EDWARDSTOWN
PHONE (08) 8277 4933 FAX (08) 8277 9126

A.C.N. 007 683 472

TITLE OP20 WITH DETENT ASSEMBLY EXPLODED VIEW

DRG. NO.	MATL: ****	
020*****	DRN: James WEIR	DATE: 10/11/2003
0 REV A4	CKD:	DATE:
APP:	APP:	DATE:

REVISION DETAILS		
ECN	DATE	DESCRIPTION

NOTES
- ALL DIMENSIONS IN mm
- BREAK ALL SHARP EDGES
- ALL DRILL DEPTHS ARE TO SHOULDER

GENERAL TOLERANCE
0. = ±0.5 mm
0.0 = ±0.25 mm
0.00 = ±0.10 mm
0.000 = ±0.02 mm
✓ 1.6
⊙ 0.10
UNLESS STATED OTHERWISE
SCALE: SHEET 1 OF 1