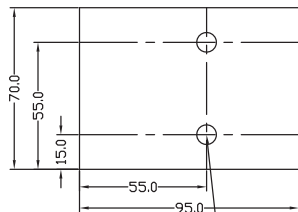
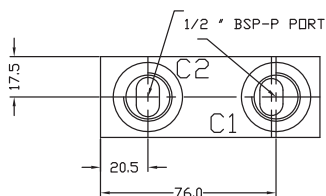
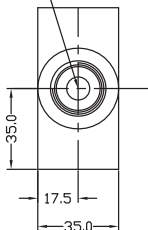
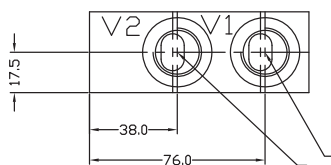


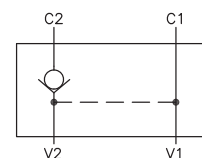
Ø10.0x88DP
CAVITY 3S
D2A060
PP11060



Ø8.5 Through
2 holes



1/2" BSP-P PORT



OILPATH PTY LTD

21 DELORAIN ROAD, EDWARDSTOWN
PHONE (08) 8277 4933 FAX (08) 8277 9126 A.C.N. 007 683 472

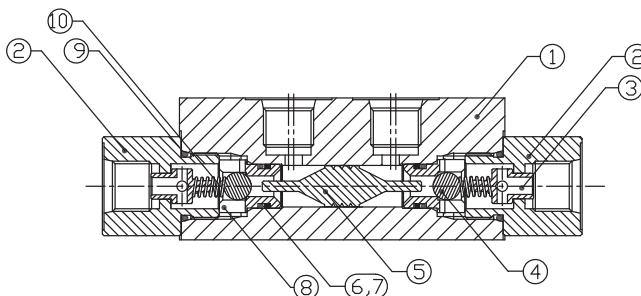
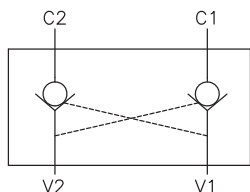
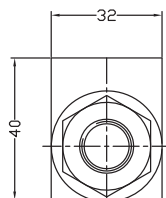
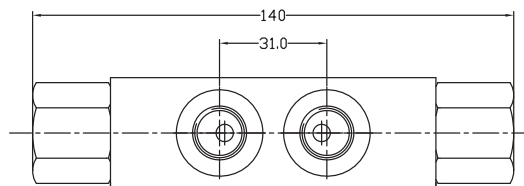
REVISION DETAILS		
ECN	DATE	DESCRIPTION

NOTES
-all drill depths are to shoulder
-deburr all sharp edges
-stamp ports

GENERAL TOLERANCE
0. = ±0.5 mm
0.0 = ±0.25 mm
0.00 = ±0.10 mm
0.000 = ±0.02 mm
√ 1.6
Ⓢ 0.10
UNLESS STATED OTHERWISE
SCALE: NTS SHEET 1 OF 1

TITLE DP151 4 PORT S/A PILOT CHECK VALVE			
DRG. NO. 226341	MATL: 107.95x50.8x79.0 mm 2011 T6	DRN: V.Troyanovsky	DATE: 26/11/97
REV A4	CKD:	APP:	DATE:

ITEM	DESCRIPTION	P/NO.	QTY
1	LOCK VALVE BODY	226388	1
2	9/16" UNF STD LENGTH FITTING	240112	2
3	STROKE LIMITER	252060	2
4	5/16" CHROME STEEL BALL	417008	2
5	LOCK VALVE SPOOL	249148	1
6	BS 012 NITRILE O-RING	401023	2
7	BS012 BACKUP	402006	2
8	LOCK VALVE SEAT CAGE	245007	2
9	BS 114 O-RING	401009	2
10	SPRING	416077	2



OILPATH PTY LTD

21 DELORAIN ROAD, EDWARDSTOWN
PHONE (08) 8277 4933 FAX (08) 8277 9126 A.C.N. 007 683 472

REVISION DETAILS		
ECN	DATE	DESCRIPTION

NOTES
1. ALL DIMENSIONS IN mm.
2. ENSURE BALL SEATS ARE LAPPED BEFORE ASSY.
3. BACKUP GOES CLOSEST TO NOSE OF SEAT CAGE
4.
5.
6.
7.

GENERAL TOLERANCE
0. = ±0.5 mm
0.0 = ±0.25 mm
0.00 = ±0.10 mm
0.000 = ±0.02 mm
√ 0.10
Ⓢ 0.10
UNLESS STATED OTHERWISE
SCALE: 1:1 SHEET 1 OF 1

TITLE DP152 LOCK VALVE ASSY 9/16" UNF FEM CONNECTION - 140 MM			
DRG. NO. 680389	MATL:	DRN: S. BURDON	DATE: 18/2/99
REV A3	CKD:	APP:	DATE: