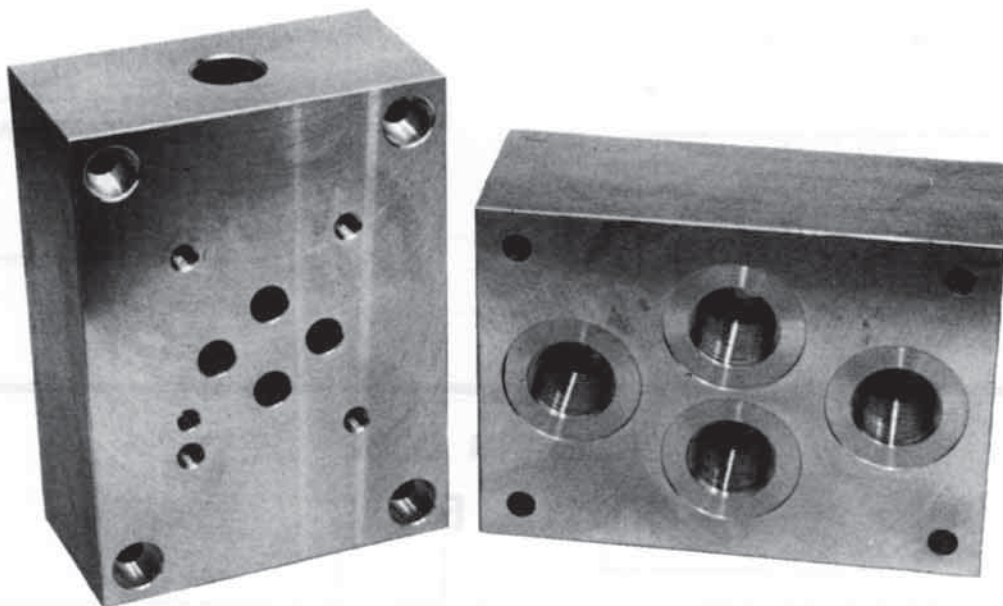


OILPATH

MODEL OP111-B

CETOP 3
ALLOY SUBPLATE
BOTTOM PORT ENTRY



- Manufactured from high grade aluminium alloy.
- Nominal flow 40 ltrs per minute.
- Maximum pressure rating is 245 Bar.
- Cetop 3, (NG6) mounting interface.
- Reduced weight.

GENERAL DESCRIPTION

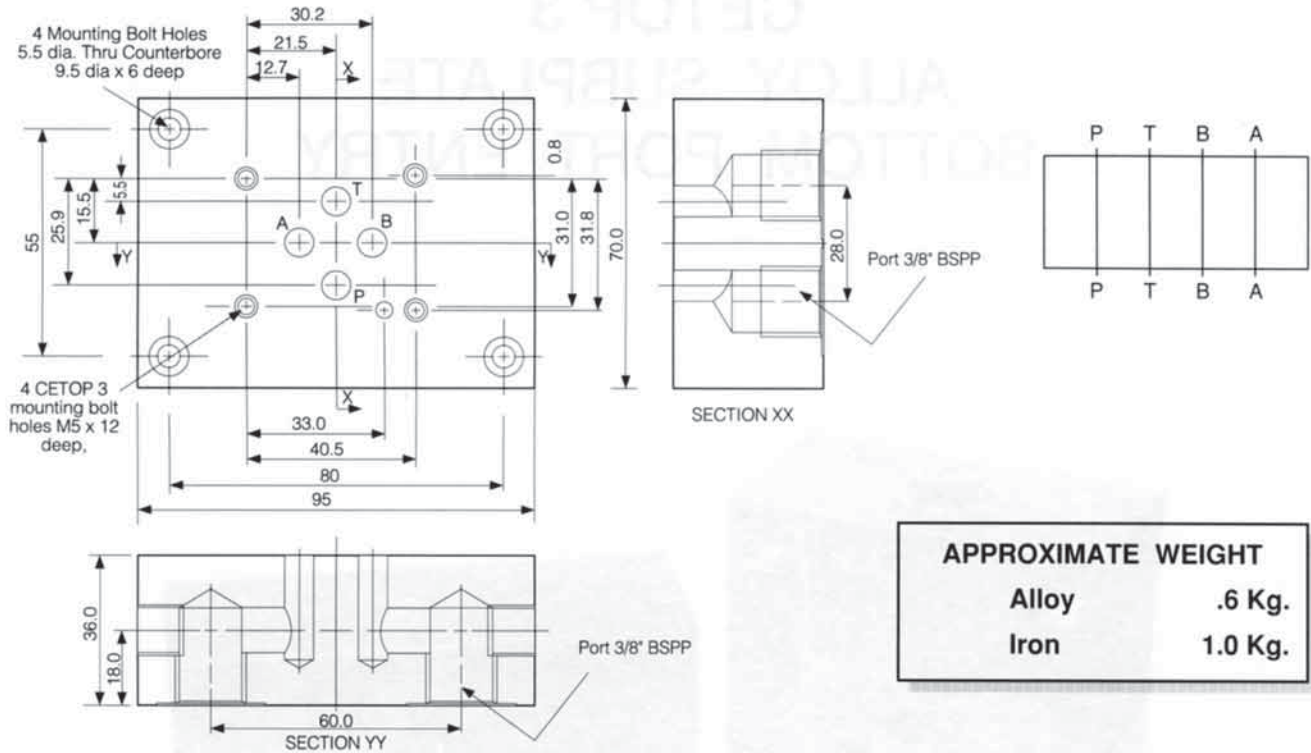
The OP111-B alloy subplate which is suitable for Cetop 3 (NG6) valves, has been developed as an alternative to the model OP111-A subplate.

The OP111-B has all of its service ports positioned on the rear of the subplate directly opposite the Cetop 3 mounting interface.

This rear port design allows for panel mounting of the valve with pipe work neatly positioned and hidden from view.

SPECIFICATIONS

- Maximum operating pressure is 245 bar.
- Maximum flow is a nominal 40 ltrs per min.
- Mounting pad galleries are 7.0mm in diameter to suit high flow design valves.
- Pressure, tank and service ports are 3/8" BSPP.
- Mounting surface to CETOP R35H size 3, NG6 and NFPA DO1 standard.



ORDERING CODE OP111 - B - C

Model number

Bottom entry ports

Used only if cast iron is required instead of aluminum alloy

DISTRIBUTED BY

Manufactured by :

OILPATH PTY. LTD.

incorporated in South Australia
A.C.N. 007 683 472

21 Deloraine Road,
Edwardstown, South Australia.
PO Box 132, Edwardstown 5039,
AUSTRALIA.

Ph: (08) 2774933 Fax: (08) 2779126

WARRANTY

Oilpath products are warranted to be free of defects in material or workmanship. This warranty voids all other warranties, whether expressed or implied, and shall be in effect for 6 months from date of purchase. The warranty is limited to replacement or repair, excluding seals or damage arising from misuse or incorrect installation. The company accepts no liability for faults caused by improper use or faulty maintenance of the product, or its operation beyond recommended specifications, or contingent or consequential loss or damage under any situation whatsoever. All unauthorised modifications to the product automatically voids the conditions of this warranty.