



# HYDRAFORCE

High Performance Hydraulic Cartridge Valves  
and Electro-Hydraulic Control Systems



NEW  
***HYPERFORMANCE***<sup>™</sup>  
HIGH PRESSURE VALVES

[www.hydraforce.com](http://www.hydraforce.com)

# HYPERFORMANCE™

H-Series High Pressure Valves

up to 350 bar / 5075 psi

HydraForce, the world's leading supplier of cartridge valve technology, introduces the new HyPerformance valve series.

These valves are designed to offer the industry's highest level of valve performance, enabling the most reliable application of cartridge technology in high duty cycle, high horsepower and high pressure machine applications.



## *New H-Series HYPERFORMANCE Valves*

The new H-Series HyPerformance™ valves supplement the high-pressure standard valves currently released in the HydraForce catalog.

H-Series valves are differentiated by the heavy duty qualification test standard (NFPA T 2.6.1) and the new cavity specification.

### FEATURES:

- 350 bar/5075 psi continuous operating pressure.
- 420 bar/6090 psi intermittent 10% duty cycle tested.
- Fatigue tested to 420 bar/6090 psi for 2 million cycles.
- Flows up to 379 lpm/100 gpm.
- 1000 hour salt spray tested.
- IP69K rated solenoid coils.
- Single-piece, high endurance PPD I Urethane seals rated to 135°C (275°F)
- Vibration tested (3-axis) to 20G RMS.

### BENEFITS:

High installation torque improves reliability under heavy duty cycle conditions.

Single-piece urethane seals eliminate back-up rings and improve ease-of-installation. Optional fluorocarbon seals with back-up rings are available.

Modified cavity with bottom shoulder, enhances strength and prevents twisting or binding during installation, assuring accurate and consistent performance.

All High Performance Products are tested to the rigorous NFPA T 2.6.1 standard of 900K cycles at 350 bar/5075 psi and 100K at 420 bar/6090 psi to ensure long-life and superior performance throughout the life of your machine.

# HYPERFORMANCE™

## H-Series High Pressure Valves

up to 350 bar / 5075 psi

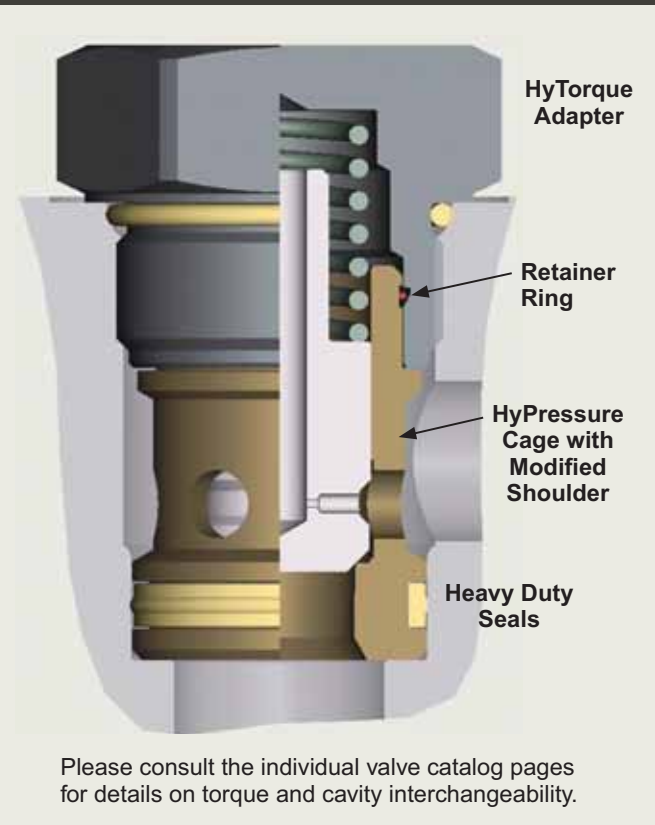
### HYPRESSURE Reliability

- H-Series valves are qualified at 1 million cycles at 350 bar / 5075 psi with pressure excursions to 420 bar / 6090 psi for 10% of the duty cycle.
- Burst Pressure tested up to 1379 bar/20,000 psi.
- Fatigue tested to 420 bar for 2 million cycles.

### HYPERFORMANCE Cavity

- H-Series valves use a modified standard cavity with a bottom shoulder to support the cage.
- The valve cage is clamped between the adapter and the bottom shoulder in order to strengthen the pressure holding capability of the cartridge.
- The cavity profile is the same as the standard HydraForce profile with the exception of the bottom shoulder. A revised form tool is required in order to control the shoulder depth.

### HYPERFORMANCE Construction



Please consult the individual valve catalog pages for details on torque and cavity interchangeability.

### HYFLOW – HYHORSEPOWER

- H Series valves will be released as a family of products ranging from the -08 common cavity size to the metric -42 cavity with flow ratings up to 379 lpm/100 gpm.

### HYSTRENGTH Sealing

- High strength, high temperature rated PPDI Urethane seals provide reliability under heavy duty cycle operation.
- Back-up rings are eliminated providing an easier and more reliable installation.
- Fluorocarbon seals are optional with Teflon® back-up rings.

### HYTORQUE Installation

- Installation torques of 3 to 4 times standard screw-in cartridges prevents back-out under heavy cyclic high pressure operation.
- The valve cage is retained in, but not fixed to the adapter in order to prevent distortion or binding during installation.

### HYVIBRATION Tolerance

- Valve coils and stem tubes are tested to a 20G RMS 3-axis profile assuring reliability in severe mobile machinery applications.

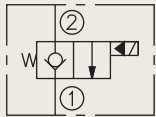
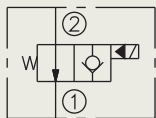
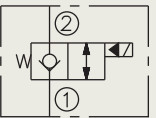
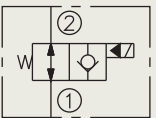
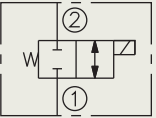
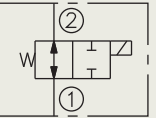
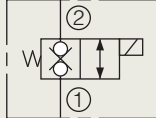
### HY-COIL Integrity

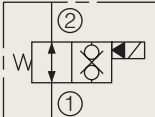
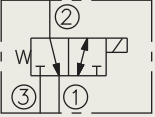
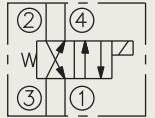
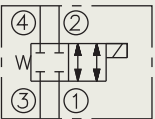
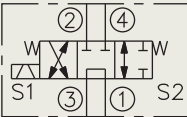
- HydraForce coils are designed for continuous operation at +/- 15% of rated voltage assuring reliable and safe operation under cold temperature, weak battery, and continuous duty conditions.
- E and H Series IP 69K Coils are tested for severe application conditions including thermal shock, water immersion, vibration, dust, high pressure cleaning, severe load cycling, extreme storage temperatures, chemical resistance and humidity.
- H Series valves used with H Series coils provide 1000-hour salt spray protection against red rust corrosion.

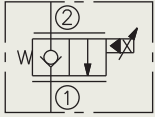
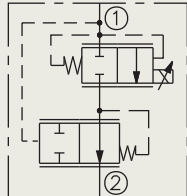
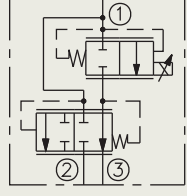
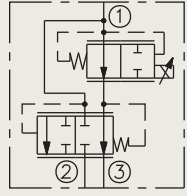
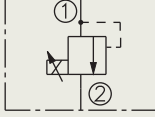
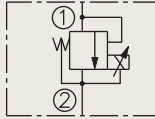
# HYPERFORMANCE™

High Pressure Pro u t i e

up to 350 bar / 5075 psi

H	P	V
N.C. Poppet		
Std.	<b>SF08-20</b>	
	27 lpm/7 gpm	
HyP	<b>HSV10-20</b>	
	75 lpm/20 gpm	
	Mid 2010	
N.O. Poppet		
Std.	<b>SF08-21</b>	
	39 lpm/10 gpm	
HyP	<b>HSV10-21</b>	
	75 lpm/20 gpm	
	Mid 2010	
N.C. Reverse Flow		
Std.	<b>SF08-22</b>	
	23 lpm/6 gpm	
N.O. Reverse Flow		
Std.	<b>SF08-23</b>	
	30 lpm/8 gpm	
N.C. Spool		
HyP	<b>HSV10-24</b>	
	30 lpm/8 gpm	
	Mid 2010	
N.O. Spool		
HyP	<b>HSV10-25</b>	
	30 lpm/8 gpm	
	Mid 2010	
N.C. Blocking/ Poppet		
HyP	<b>HSV10-28</b>	
	76 lpm/20 gpm	
	Mid 2010	

H	P	V	(cont'd.)
N.O. Blocking/ Poppet			
HyP	<b>HSV10-29</b>		
	76 lpm/20 gpm		
	Mid 2010		
3-Way Spool			
Std.	<b>SV58-30</b>		
	15.1 lpm/4 gpm		
HyP	<b>HSV10-30</b>		
	22 lpm/5.8 gpm		
	Late 2010		
4-Way N.O. Spool			
Std.	<b>SV58-40</b>		
	11 lpm/3 gpm		
HyP	<b>HSV10-40R</b>		
	22 lpm/5.8 gpm		
	Mid 2010		
4-Way N.C. Spool			
Std.	<b>SV58-41</b>		
	17 lpm/4.5 gpm		
4-Way 3-Position Spool			
HyP	<b>HSV10-47</b>		
	22 lpm/5.8 gpm		
	Late 2010		

H	P	V
E	-P	
Proportional Directional 2-Way, N.C.		
HyP	<b>HSP16-20</b>	
	227 lpm/60 gpm	
	Mid 2010	
Proportional Flow Control, Restrictive, N.C.		
HyP	<b>HPV12-20</b>	
	64 lpm/17 gpm	
	Mid 2010	
Proportional Flow Control, Bypass, N.C.		
HyP	<b>HPV12-30</b>	
	64 lpm/17 gpm	
	Mid 2010	
HyP	<b>HPV16-30</b>	
	151 lpm/40 gpm	
	Late 2010	
Proportional Flow Control, Bypass, N.O.		
HyP	<b>HPV16-31</b>	
	79 lpm/21 gpm	
	Late 2010	
Proportional Pressure Control		
Std.	<b>TS58-20</b>	
	7.6 lpm/2 gpm	
Proportional Pressure Control		
Std.	<b>TS58-21F</b>	
	1.9 lpm/0.5 gpm	

Valves labeled "Std." utilize standard HydraForce valve cavities, are rated at 345 bar/5000 psi, and are available now.

# HYPERFORMANCE™

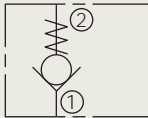
High Pressure Pro u t i e

up to 350 bar / 5075 psi

## H P C V

### Poppet, Check

Std. **CV50-20**  
57 lpm/15 gpm

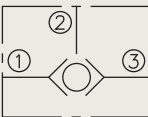


HyP **HCV16-20**  
151 lpm/39 gpm  
Available Now

HyP **HCV42-M20**  
302 lpm/80 gpm  
Available Now

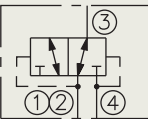
### Shuttle

Std. **LS50-30**  
30 lpm/8 gpm



### Hot Oil Shuttle

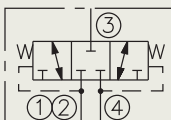
Std. **HS50-42**  
22 lpm/6 gpm



Std. **HS52-42**  
114 lpm/30 gpm

### Hot Oil Shuttle

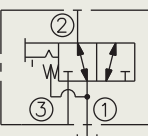
Std. **HS50-43**  
45 lpm/12 gpm



Std. **HS52-43**  
132 lpm/35 gpm

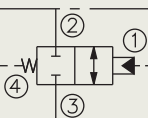
### Manual Shift Spring Return

Std. **MP58-30**  
25 lpm/6.5 gpm



### 3-Way Directional

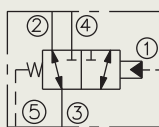
HyP **HPD42-M44**  
265 lpm/70 gpm  
Mid 2010



## H P V (cont'd.)

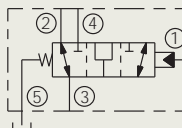
### 3-Way Directional

Std. **PD42-S50**  
265 lpm/70 gpm



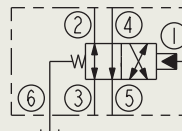
### 3-Way Directional

HyP **HPD42-S50**  
265 lpm/70 gpm  
Late 2010



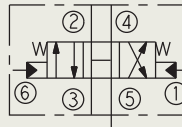
### 4-Way Directional

HyP **HPD42-S60**  
189 lpm/50 gpm  
Late 2010



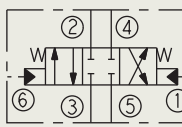
### 4-Way 3-Pos. N.O.

HyP **HPD42-S67B**  
150 lpm/40 gpm  
Late 2010



### 4-Way 3-Pos. N.C.

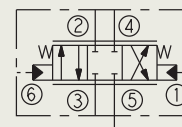
HyP **HPD16-S67C**  
95 lpm/25 gpm  
Late 2010



## H P P V

### 4-Way 3-Pos. N.C. Pilot-Operated

HyP **HPE16-S67C**  
90 lpm/24 gpm  
Late 2010



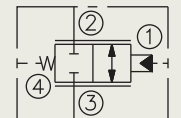
### HyP **HPE42-S67C**

150 lpm/40 gpm  
Late 2010

## H P P V (cont'd.)

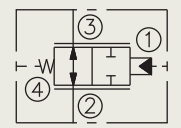
### 2-Way N.C. Pilot-Operated

HyP **HPE42-M44**  
265 lpm/70 gpm  
Late 2010



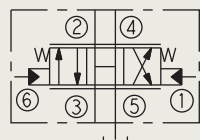
### 2-Way N.O. Pilot-Operated

HyP **HPE42-M45**  
265 lpm/70 gpm  
Late 2010



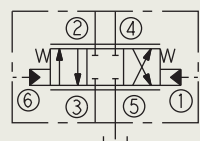
### 3-Position N.O. Pilot-Operated

HyP **HPE42-S67B**  
150 lpm/40 gpm  
Late 2010



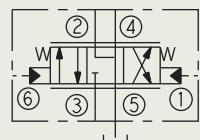
### 3-Position N.C. Pilot-Operated

HyP **HPE42-S67C**  
150 lpm/40 gpm  
Late 2010



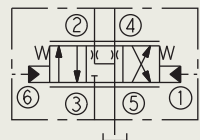
### Pilot-Operated Meter-in and Meter-Out

HyP **HPE42-S67D**  
170 lpm/45 gpm  
Late 2010



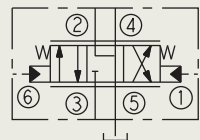
### 3-Position Pilot-Operated

HyP **HPE42-S67H**  
150 lpm/40 gpm  
Late 2010



### Pilot-Operated Meter-Out Only

HyP **HPE42-S67K**  
170 lpm/45 gpm  
Late 2010



Valves labeled "Std." utilize standard HydraForce valve cavities, are rated at 345 bar/5000 psi, and are available now.

# HYPERFORMANCE™

High Pressure Pro u t i e

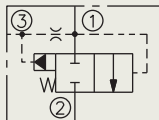
up to 350 bar / 5075 psi

## H P V L E

### Vented Logic

Std. **EV10-S34**  
76 lpm/20 gpm

Std. **EV12-S34**  
113 lpm/30 gpm



HyP **HEV16-S34**  
189 lpm/50 gpm  
Mid 2010

Std. **EV20-S34**  
379 lpm/100 gpm

HyP **HEV42-S34**  
379 lpm/100 gpm  
Available Now

## H P P L E

### Piloted Logic

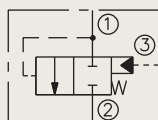
Std. **EP08-35**  
38 lpm/10 gpm

Std. **EP10-S35**  
76 lpm/20 gpm

Std. **EP12-S35**  
113 lpm/30 gpm

Std. **EP20-S35**  
379 lpm/100 gpm

HyP **HEP42-S35**  
379 lpm/100 gpm  
Available Now

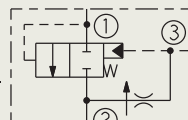


## H P P L E (cont'd.)

### Pressure Compensating

Std. **EPFR58-S35**  
38 lpm/10 gpm

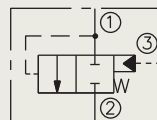
Std. **EPFR50-S35**  
76 lpm/20 gpm



Std. **EPFR52-S35**  
151 lpm/40 gpm

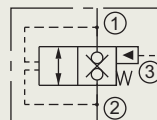
### Pilot-to-Close

HyP **HEP16-S35**  
189 lpm/50 gpm  
Mid 2010



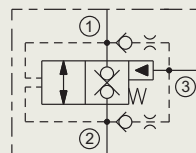
### Poppet Logic

Std. **EP10-S38**  
113 lpm/30 gpm



### Checked Logic

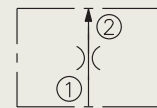
HyP **HEP42-S39**  
284 lpm/75 gpm  
Available Now



## H P F C

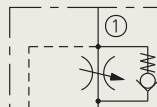
### Pressure Compensated, Fixed

Std. **FR50-20F**  
22.7 lpm/6 gpm

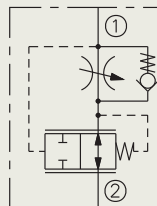


### Pressure Compensated, Adjustable

Std. **FR50-23**  
11.5 lpm/3 gpm

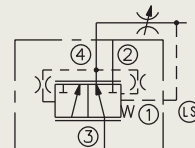


Std. **FR50-28**  
34 lpm/9 gpm



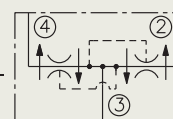
### Pressure Compensator with Load Sense

HyP **HEC32-43**  
303 lpm/80 gpm  
Late 2010



### Divider/Combiners

Std. **FD50-45**  
19 lpm/5 gpm



Std. **FD52-45**  
38 lpm/10 gpm

Std. **FD56-45**  
53 lpm/14 gpm

Valves labeled "Std." utilize standard HydraForce valve cavities, are rated at 345 bar/5000 psi, and are available now.

Complete technical information and New Products at [www.hydraforce.com](http://www.hydraforce.com)

# HYPERFORMANCE™

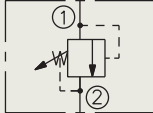
High Pressure Product Line

up to 350 bar / 5075 psi

## High Pressure Pressure Controls

### Direct-Acting Poppet

Std. **RV58-20**  
22 lpm/6 gpm

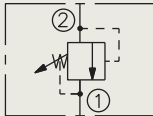


### Dynamic Relief

Std. **RVD50-20**  
113 lpm/30 gpm

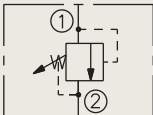
### Differential Area Poppet

Std. **RV50-22**  
75 lpm/20 gpm



### Pilot-Operated Spool

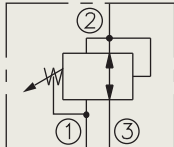
Std. **RV50-26**  
113 lpm/30 gpm



Std. **RV52-26**  
379 lpm/100 gpm

### Pressure Reducing/Relieving

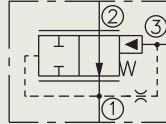
Std. **PRES50-30**  
11.4 lpm/3 gpm



## High Pressure Pressure Controls (cont'd.)

### Pressure Reducing Pilot Element

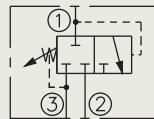
Std. **ER10-S30**  
68 lpm/18 gpm



Std. **ER12-S30**  
114 lpm/30 gpm

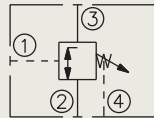
### Sequence, Pilot-Operated

Std. **PS50-36**  
57 lpm/15 gpm



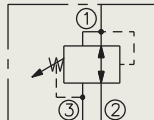
### Sequence, Normally Closed

Std. **PS50-40**  
22 lpm/6 gpm



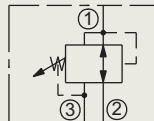
### Reducing/Relieving, Pilot Operated

Std. **PR50-36**  
56 lpm/15 gpm



### Reducing/Relieving, Direct-Acting

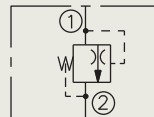
Std. **PR58-38**  
19 lpm/5 gpm



Std. **RV50-38**  
72 lpm/19 gpm

### Thermal Relief

Std. **TR04-B20**



Valves labeled "Std." utilize standard HydraForce valve cavities, are rated at 345 bar/5000 psi, and are available now.

Complete technical information and New Products at [www.hydraforce.com](http://www.hydraforce.com)



Main headquarters, engineering and manufacturing facility in Lincolnshire Illinois, just north of Chicago.



Precision machining facility in Lincolnshire, Illinois.



European headquarters, engineering and manufacturing facility in Birmingham, England.

Request our complete engineering catalog, available on CD-ROM or printed edition.  
Updates and complete technical information are always available on our website: [www.hydraforce.com](http://www.hydraforce.com)



Visit our website: [www.hydraforce.com](http://www.hydraforce.com)  
From North America Call Toll Free: 1 800 682 6875

**HYDRAFORCE INC**

500 Barclay Blvd.  
Lincolnshire, IL 60069  
Phone: 847 793 2300  
Fax: 847 793 0086

Member: National Fluid Power Assoc.  
ISO 9001

**HYDRAFORCE HYDRAULICS LTD**

St. Stephens Street  
Birmingham B6 4RG England  
Phone: 0121 333 1800  
Fax: 0121 333 1810

Member: British Fluid Power Assoc.  
ISO 9001 & ISO 14001

**HYDRAFORCE CHINA LLC**

Shanghai Representative  
Office Unit 606, B&W Tower  
No. 28 Xuanhua Rd  
Shanghai, 200050, China  
Tel: +86 21 3250 6508, 3250 6509  
Fax: +86 21 3250 6510  
Email: [khuang@hydraforce.com](mailto:khuang@hydraforce.com)

**HYDRAFORCE KOREA LLC**

#306, Mirim Plaza  
1132-1, Jungdong, Wonnigu,  
Bucheon, Kyunggido, Korea  
Tel: +82 32 328 2170  
Fax: +82 32 328 2172  
Email: [jong-seongl@hydraforce.com](mailto:jong-seongl@hydraforce.com)

**HYDRAFORCE HYDRAULICS - INDIA**

Vatika Business Centre  
Suite No. 22, Level 5, C Wing  
Techpark One, Airport Road  
Yerwada, Pune 411006  
Maharashtra, India  
Tel: +91 020 40111304  
Fax: +91 020 40111105  
Email: [bharatb@hydraforce.com](mailto:bharatb@hydraforce.com)



HydraForce valves meet RoHS environmental requirements restricting the use of cadmium, quick silver, lead hexavalent chrome, polybrominated biphenyl (PPB) or polybrominated diphenyl Ester (PPDE) in products, components and packing materials. All HydraForce products meet requirements limiting the use of hazardous materials as identified in OSHA Standard 1910.1200(g).