

HPC16 PRESSURE COMPENSATED (BYPASS) FLOW CONTROL to 45 GPM



Function: HPC16 is a three-port manual flow control cartridge providing pressure compensated flow to a priority port with excess flow bypassed to tank or other work functions. When the bypass port is plugged, the valve functions as a two-port pressure compensated flow control.

Applications: Any circuit requiring pressure compensated flow control to one function, with excess flow diverted to tank or other work functions (Valve will function with bypass pressure higher than priority pressure).

Flow Ranges:

- Priority flow range: 1 to 45 GPM
- Max input flow: 45 GPM

Operating Pressure:

- 3000 psi maximum (consult factory for higher pressures)

Cavity: 16-3 Industry Common Cavity (SAE #16, 1 5/16-12)

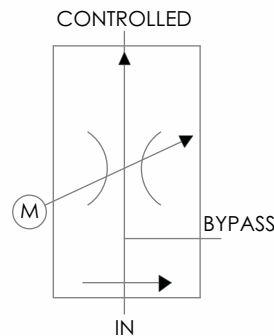
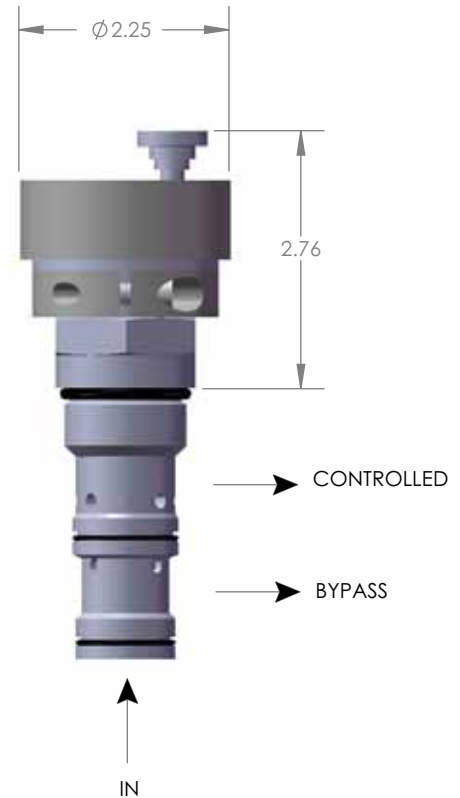
Temperature: -40 to 100° C

Internal Leakage: Less than .2 GPM at 3000 PSI

Installation: Torque at 45-50 ft-lbs (ON 1.50 HEX ONLY)

Costruction:

- Cartridge body and spool: steel
- Exposed Parts Plated



SEAL KIT = SFP25662
HOW TO ORDER

HPC16 ** *****

Select Flow Range:
15 for 1 to 15 GPM
25 for 1 to 25 GPM
45 for 1 to 45 GPM

Manifold:
10174 No Manifold, leave blank
Standard body line, SAE #12
Consult Factory for Other Options